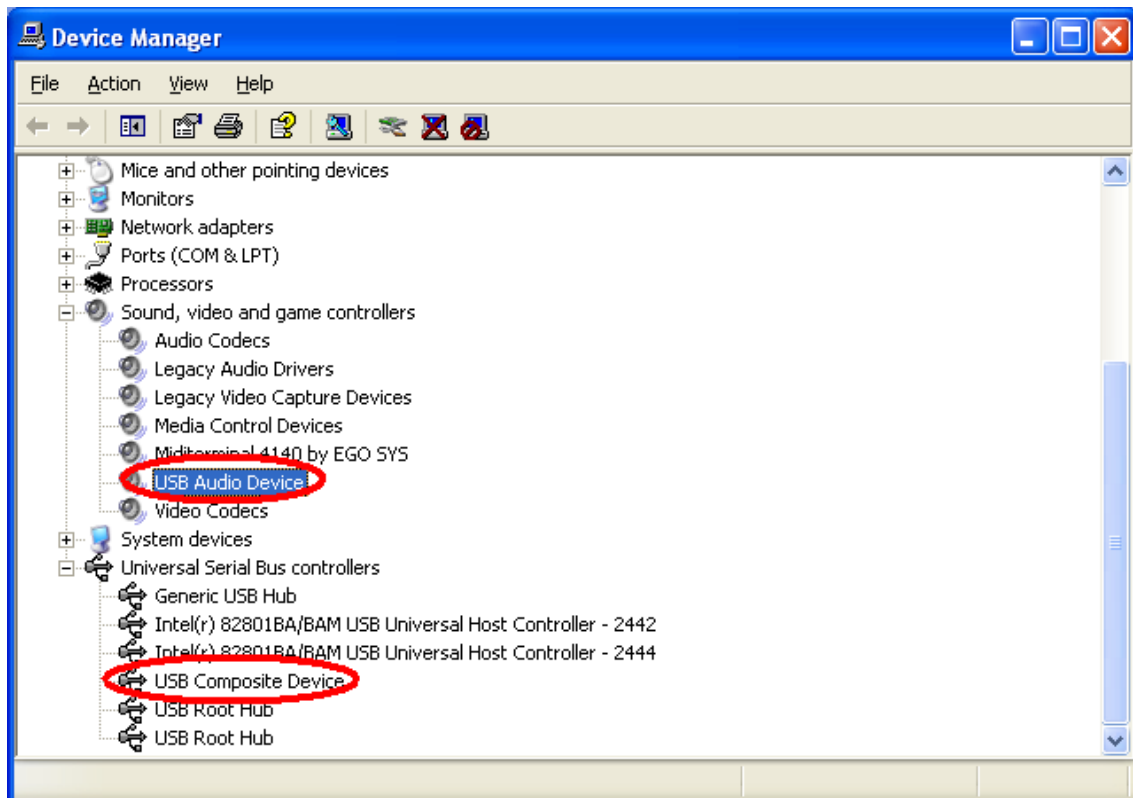


# U2A/U24 Exclusive driver installation in Windows XP

## 1. Installation

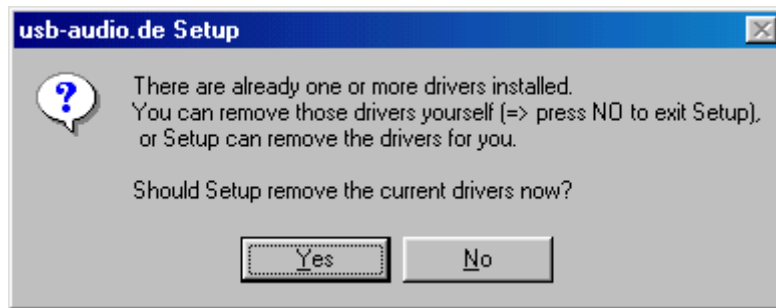
If the hardware installation was done properly, your computer will look for the Windows native drivers need to use U2A or U24 and start to install them.



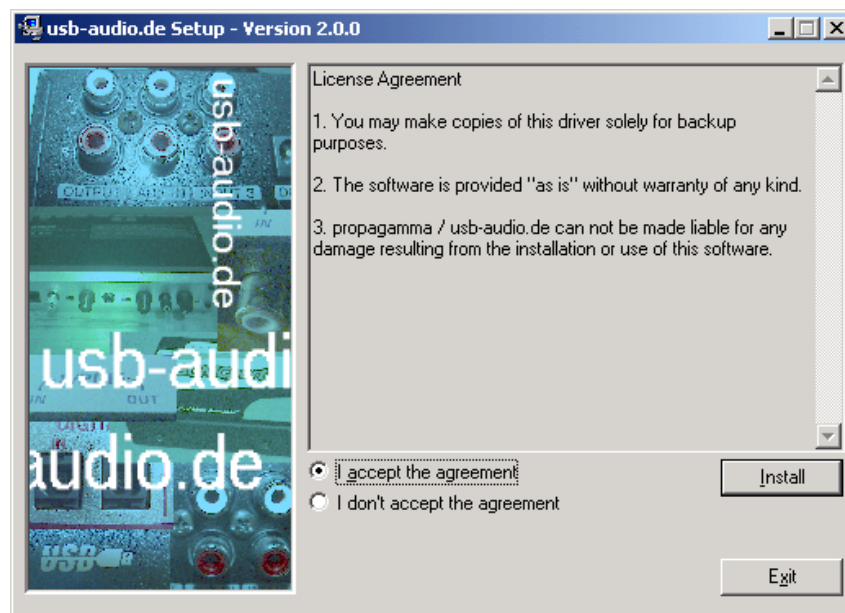
After Windows native driver was done properly, you must keep going to next exclusive U2A/U24 driver.

1. Insert the provided Driver CD or diskette into the CD-Rom drive or floppy disk drive and (or unzip U2A zip file and) copy all the files to a folder at your hard disk. Name it whatever you like. Do not move or delete any of these files, not even after the installation. Run "setup" icon.

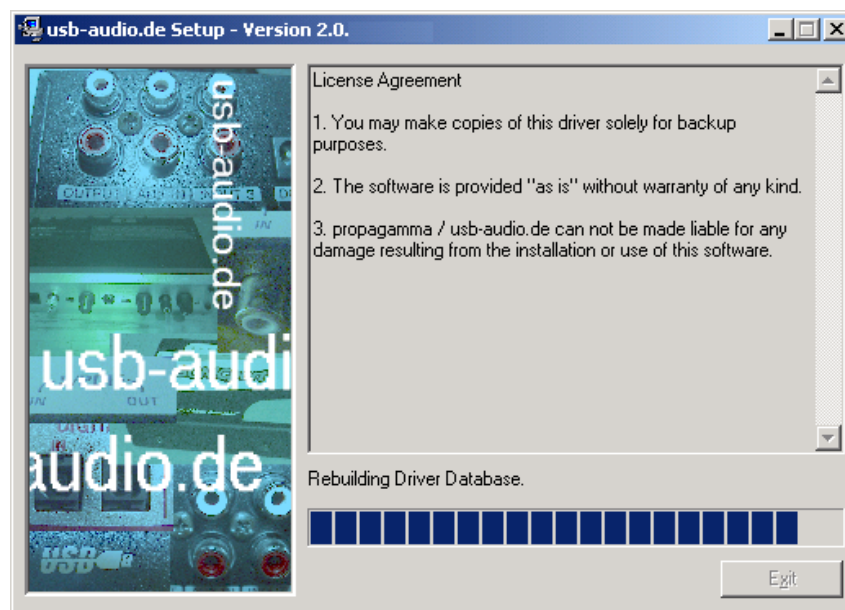
After that, if you see below message, simply click "Yes"



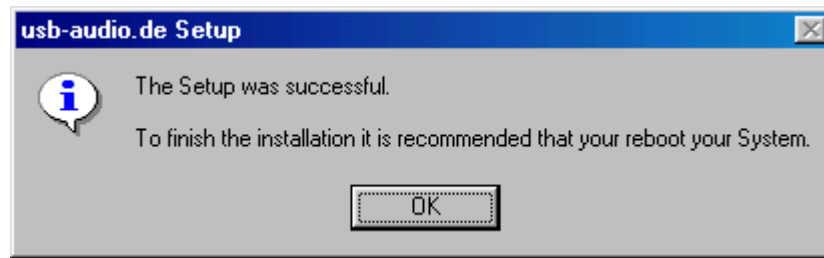
2. Check 'I accept the agreement' and click "Install".



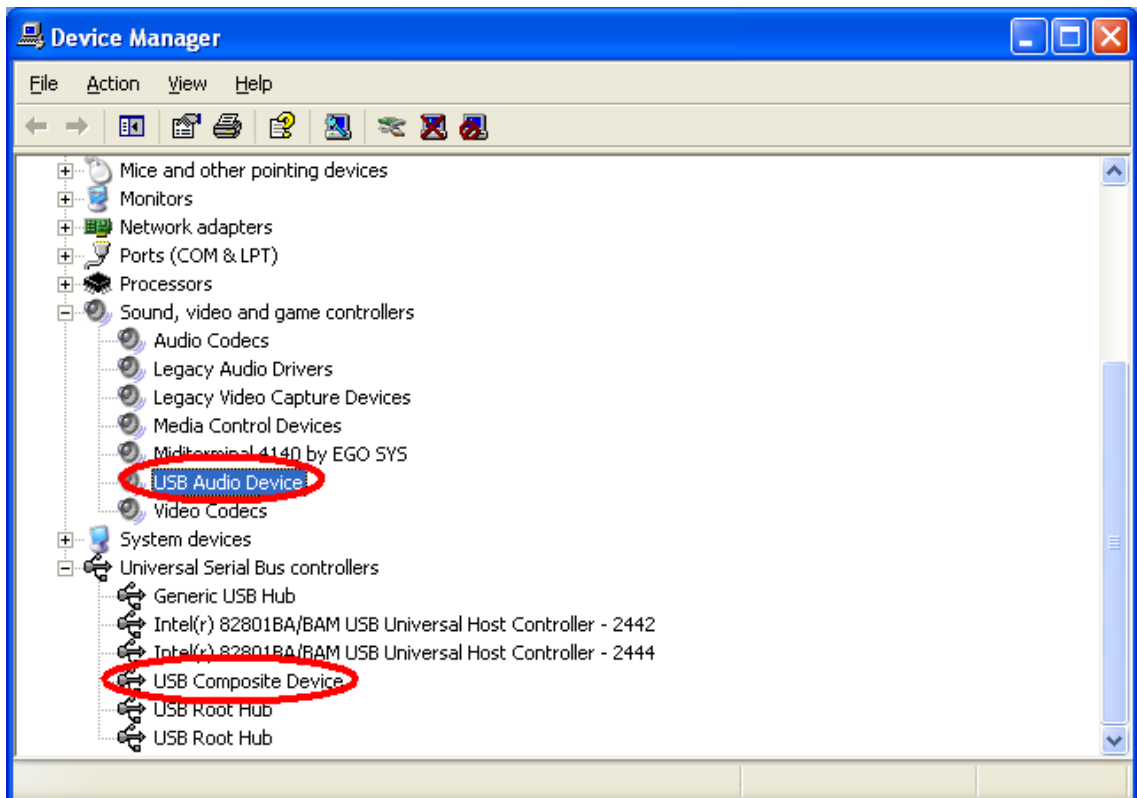
3. Exclusive U2A/U24 driver will be installed.



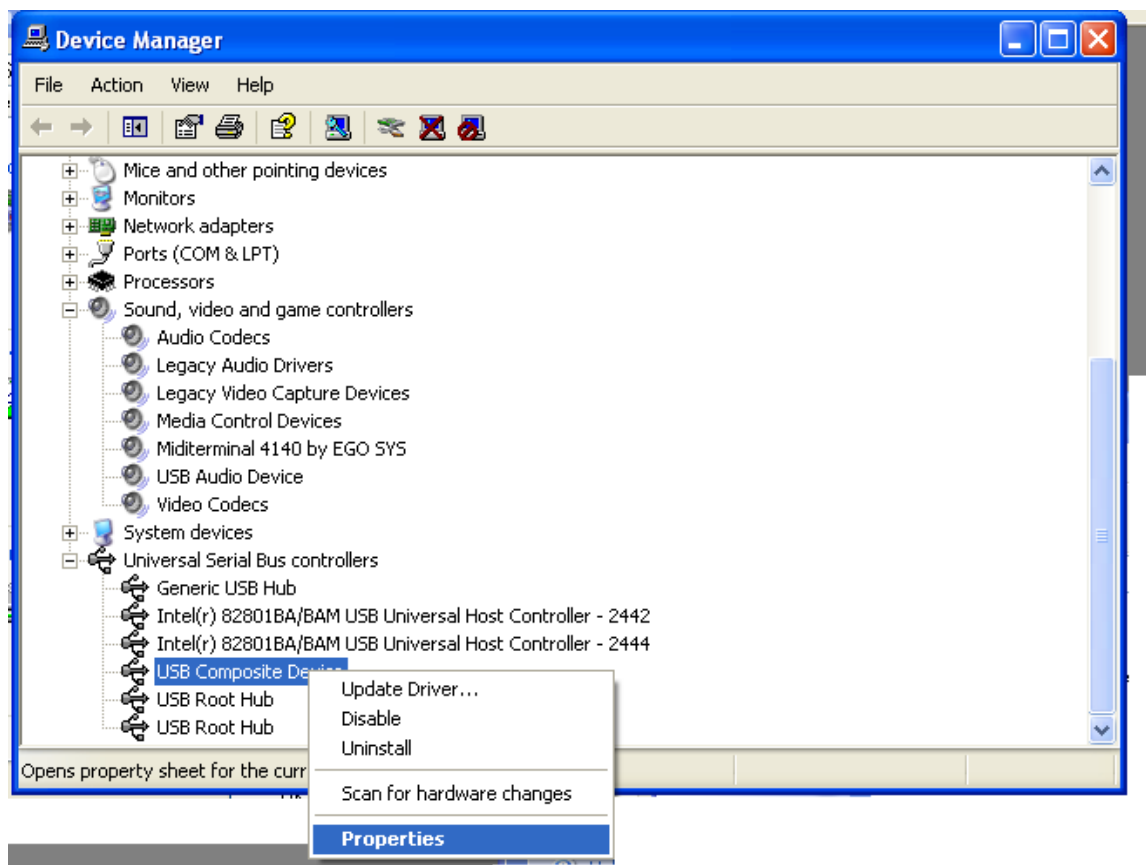
4. Click “Reboot now”



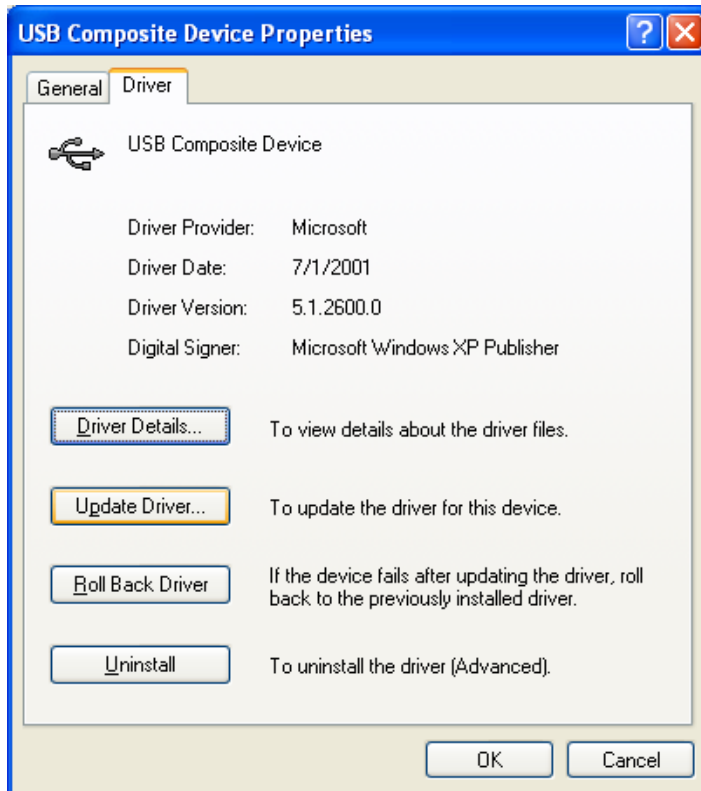
5. After install the software, Go to Device Manager again. If your windows is 2000, ME or 98SE, you finished setting. But if your windows is Win XP, **It looks nothing changed. However, your Windows now recognized U2A/U24 exclusive driver. Keep going to install follow this instruction.**



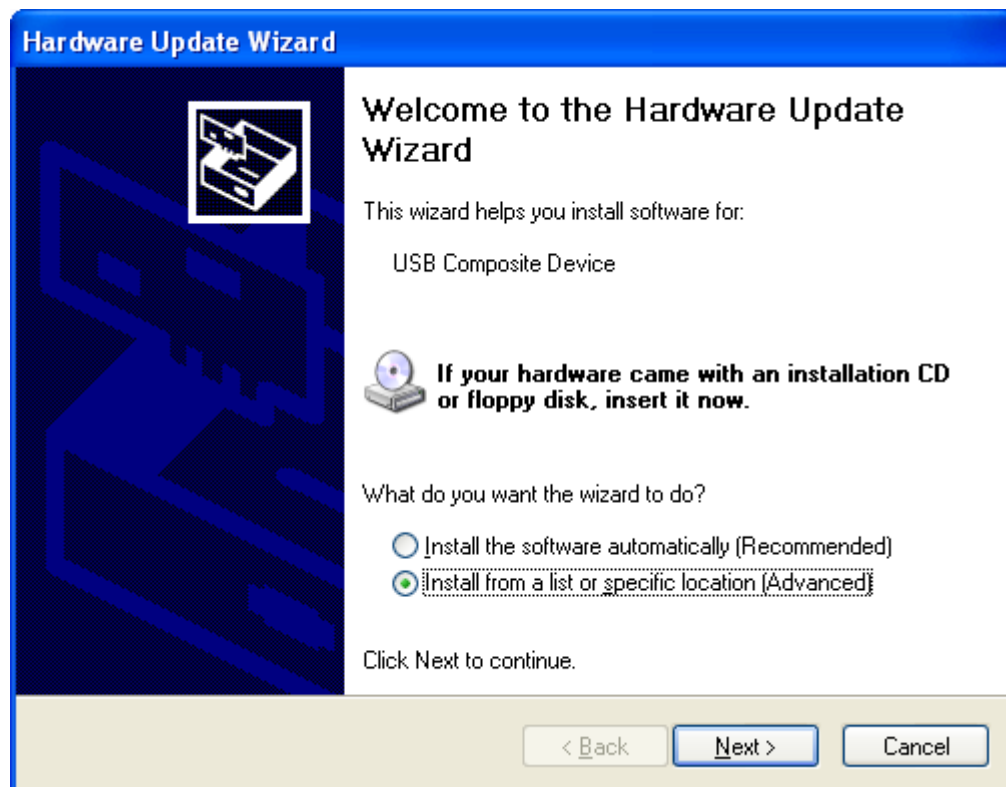
6. Right mouse click and click Properties.



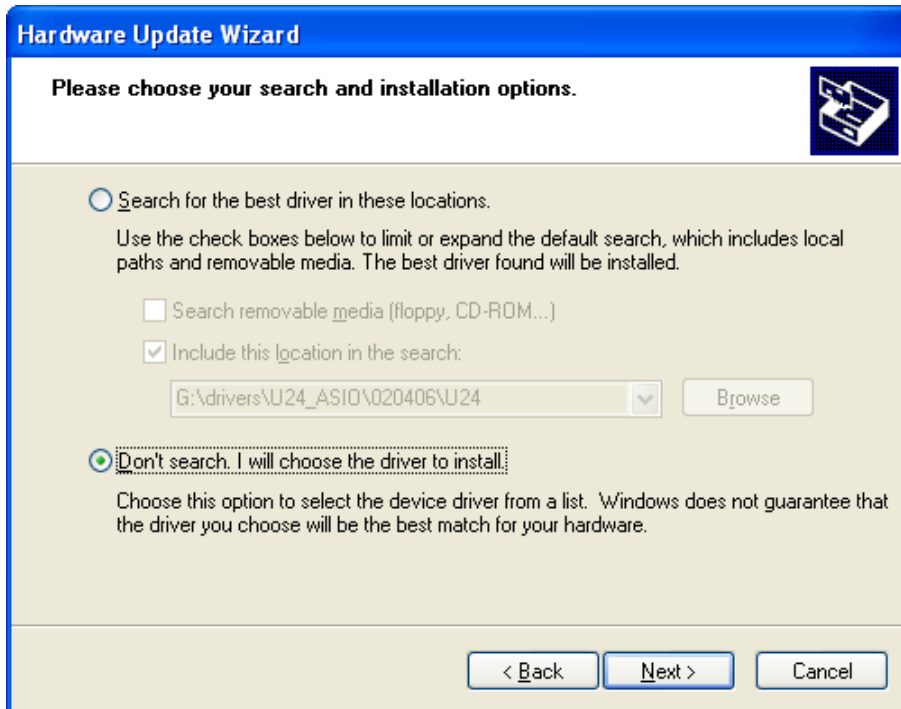
7. Click “update Driver”.



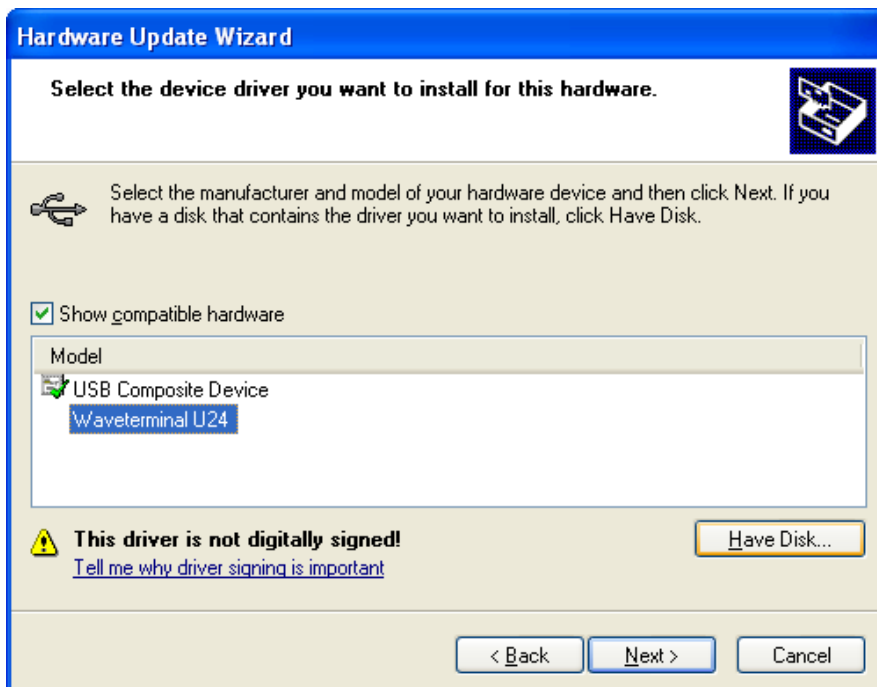
8. Choose “Install from a list or specific locations”.

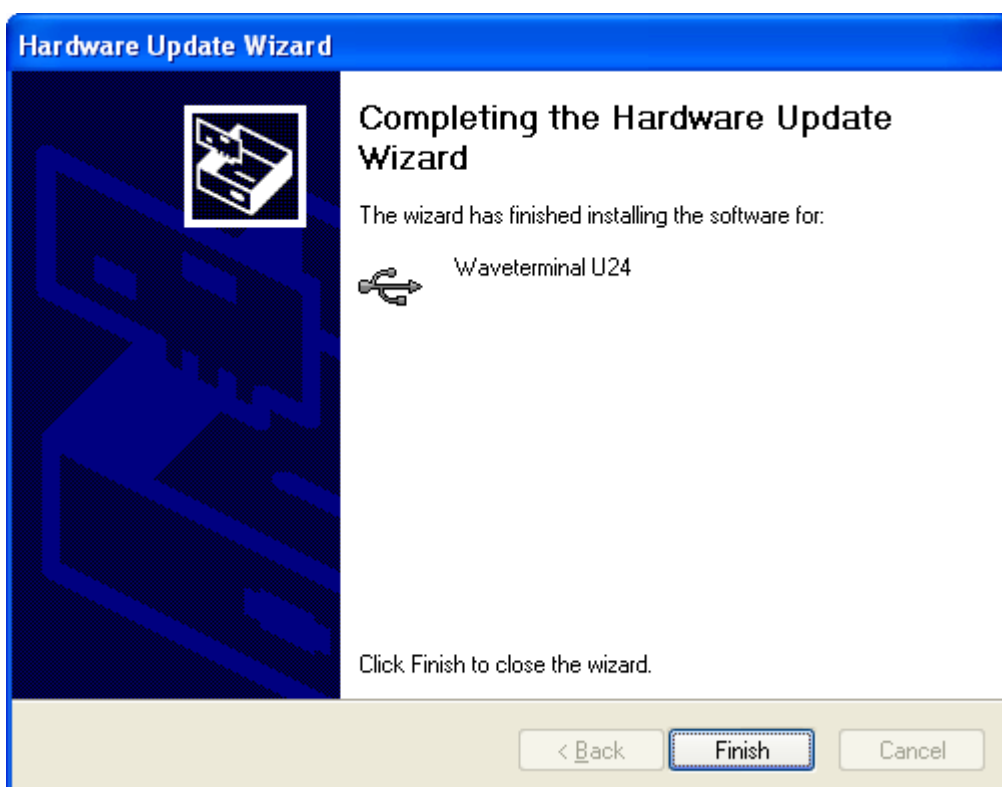
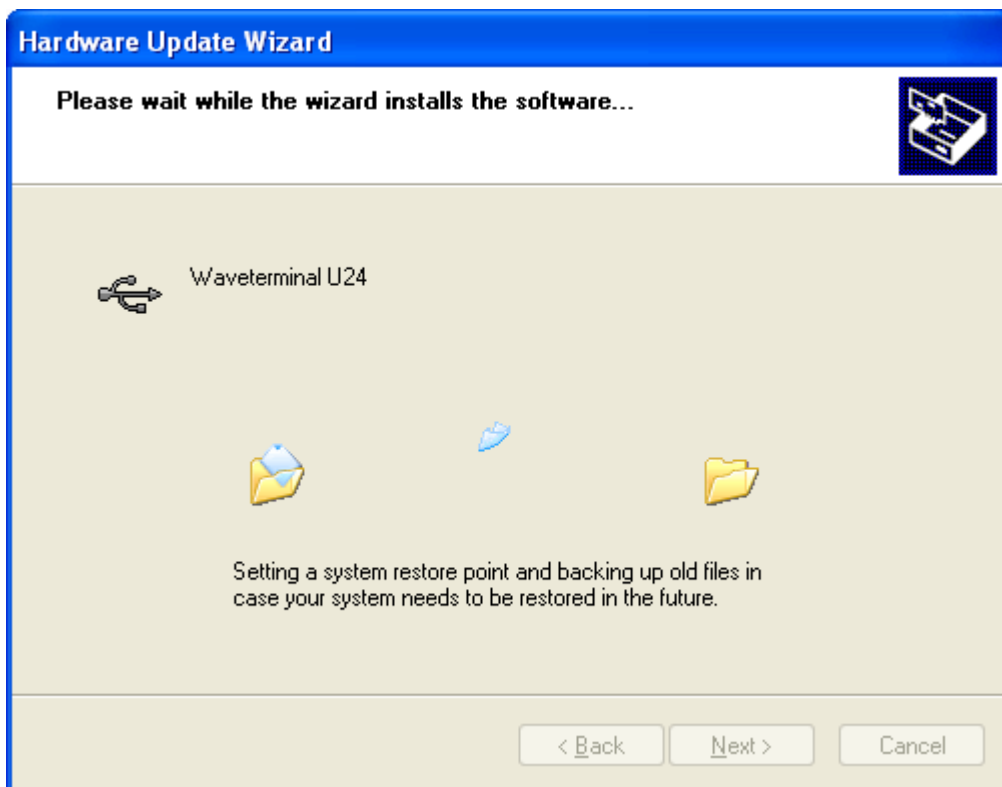


9. Choose “Don’t search. I will choose the driver to install”.



10. Choose ‘Waveterminal U24(or U2A)’



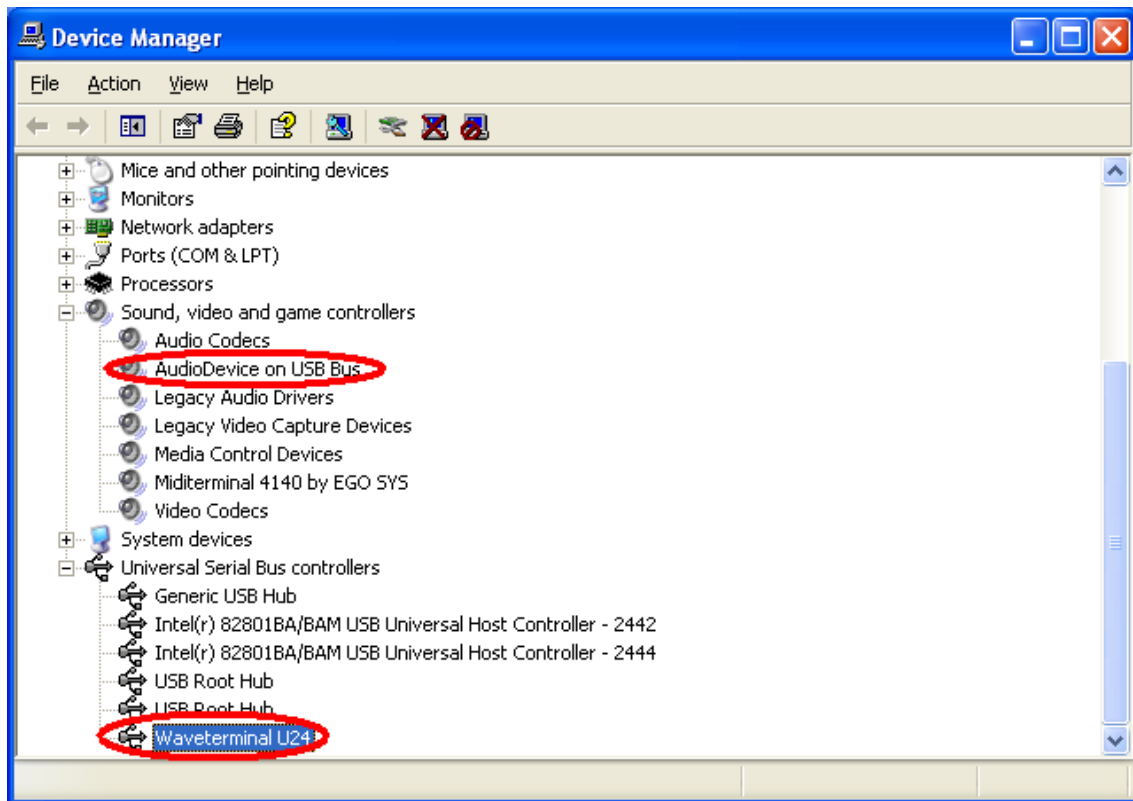








8. After rebooting your computer, open your system's Device Manager and confirms that "Waveterminal U2A/U24" is shown under "Universal Serial Bus Controllers." Now you're ready to use ASIO driver software and also MME softwares with control panel.



## 2-1. Launching MME Control Panel

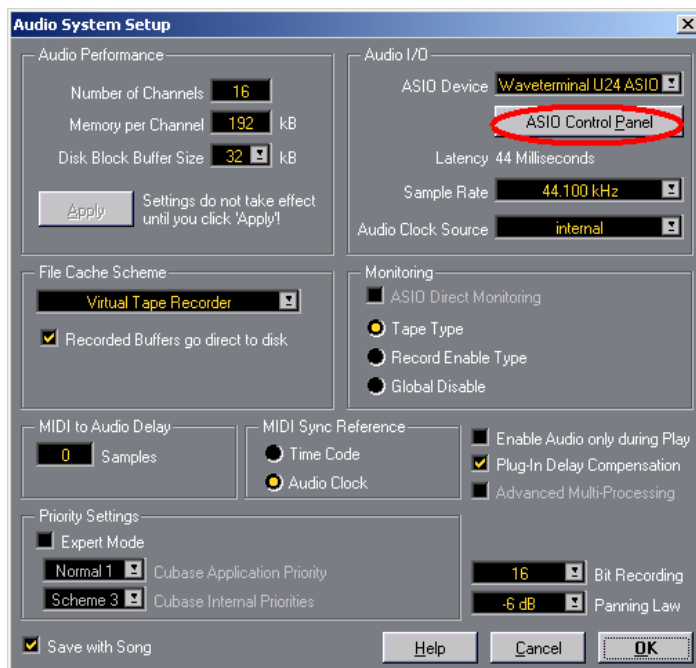
After exclusive U24/U2A driver was done properly, **unzip ‘U2xpanel.zip’ to your computer. ‘U2xpan.exe’ will be appeared.**

## 2-2. Launching ASIO2.0 Control panel

C U B A S E V S T

---

After launching Cubase, Go to ‘Option’ -> ‘Audio Setup’ -> System. Select ‘‘Waveterminal U2A/U24 ASIO driver’ for the ASIO Device.



### 3. Control Panel Reference MME & ASIO

This control panel is pretty simple.

However you should be careful with 'System performance' in Dithering menu.

In the case of U24, You have to choose the bit-rate of your recordings in 'Recording resolution'.

If your music file is 24bit recording and you're going to play it back via U24's 16bit, you can use dithering to increase quality.

Also, you can choose different system performance depends on your computer's efficiency.

Choosing 'Highspeed' and 'Faster' will bring fast processing.

But if your computer has low efficiency and you select 'Highspeed', it cause noise problem.

We generally recommend to you to select 'Normal +MME' or 'normal'.

