

AEG-LAVAMAT 85 SL

AEG-LAVAMAT 64 SL

AEG

Instructions

ADVANCED
ENGINEERING FROM
GERMANY

You have chosen well with the fully automatic washing machine type

LAVAMAT 85 SL/64 SL

We feel certain that you will be very happy with this modern automatic. But please read this little instruction booklet carefully before starting to use your machine. It will help you to get to know your LAVAMAT in next to no time.

Contents

Operation	Page 3
Washing powders	Page 4
Programmes	Page 5
Care and maintenance	Page 9
Fault finding	Page 9
Connection, technical data	Page 10

Operation

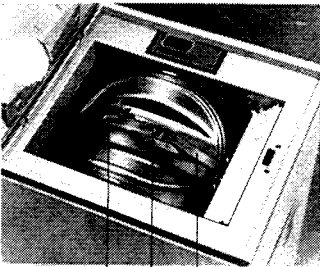
Plug machine in or switch on main switch if permanently connected.

Hook drain hose over sink edge.

Open the tap.

**Open the lid of the machine.
Remove drum lid.**

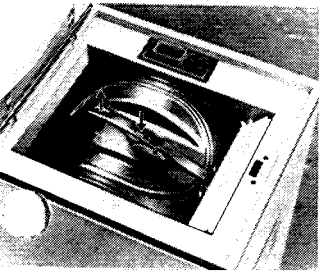
To do this press the locking button on the grip handle and lift the handle; unhook the lid clamp from the drum and remove the lid.



1 grip handle

2 locking button

3 clamp



Load the drum with dry laundry.

The drum has been loaded correctly when you can still turn your hand freely between drum wall and laundry.

Maximum load about 4.5 kg (10 lbs) dry laundry (less if washing heavily soiled items). On programmes without spinning the max. load is about 2 kg (4 lbs) and on special care programmes about 1 kg (2 lbs).

Please ensure that nothing falls into the space between drum and tub!

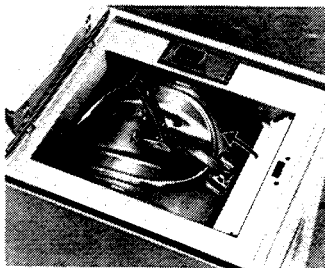
Close the drum.

Carefully hook first the rigid and then the movable clamp of the drum lid into the drum fittings and press down the grip handle.

The locking button must engage.

Please check that the grip handle cannot be raised now without pressing the locking button.

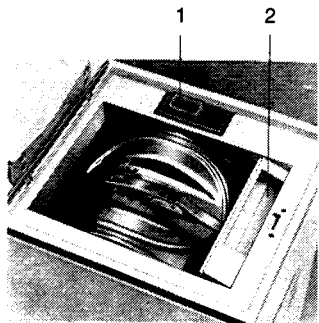
Pour the washing powder for the prewash directly on to the drum and for the main wash into the wash powder dispenser which pulls out in the direction of the arrow. The wash powder dispenser returns automatically into its starting position. If you wish to soft-rinse the laundry, add fabric softener to the small dispenser on the right.



Always follow the manufacturer's instructions when using starch, i. e. dissolve the starch and pour it directly on the drum (select separate starching programme).

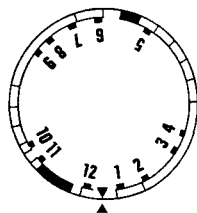
On normal programmes (normal water level) allow sufficient washing powder for about 20 litres (approx. 4 gals.), on special-care programmes (high water level) for about 30 litres (5½ gals.).

1 fabric softener
2 washing powder for the main wash

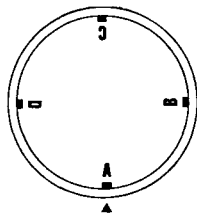


Close the lid of the machine.

The lid must engage. Open the lid during a programme cycle and the programme stops. A special locking mechanism prevents opening of the lid during spinning.



Programme control knob



Selector switch

Turn the programme control knob (left) clockwise to the required setting (only when pressed in). Turn the selector switch (right) to the appropriate position according to the programme. This selector switch may be turned clockwise or anti-clockwise.

Pull out the programme control knob.

The control lamp lights up.

The machine is operating.

The programme control knob rotates.

It stops during heating-up until the required temperature is reached.

The machine stops automatically on completion of the programme cycle. The programme control knob stops in the relevant switching-off position (one of the four breaks in the programme indicator band).

Push the programme control knob back in.

The control lamp expires.

With the special-care programmes the laundry remains floating in the last rinse water, or in the soap water when soaking. To pump off the water set the programme control knob to 11 and the selector switch to C; for pumping and a short spin (automatic SL-action) set the programme control knob to 11 and the selector switch to A; pull the programme control knob. Push the programme control knob back in and turn it to '▼'.

Open the lid (not possible until about 1 minute after completion of the programme).

Remove the laundry.

If you have nothing else for washing, close the tap and pull out the plug or switch off the main switch.

Washing powder

Always use a washing powder specially designed for automatic washing machines. The quantity required depends on the degree of soiling, the size of the load and hardness of the water. See manufacturers' recommendations. We recommend PERSIL Automatic be used in this machine. It is sometimes advisable to use more powder for the prewash than the main wash. In hard water areas it is advisable to add a water softener such as Calgon for example, to the main wash powder. The quantity depends on the hardness of the water which you can enquire from your local Water Board. See manufacturers' recommendations. Too much washing powder in conjunction with very soft water and clothes that are only lightly soiled results in excessive foaming. Should this happen, omit the prewash from the next wash. Your AEG advisory service always be pleased to help you with any practical wash problems.

Or contact the Consumer Advisory Service, Lever House, St. James Street, Kingston upon Thames, Surrey.

Wash programmes

Programme	Progr. control knob	Selector switch	Load size	Washing powder	Sequence of operations	Pumping off the last rinsing water	Practical hints
Very hot wash 95° C with prewash. HLCC 1	1	A	up to 4.5 kg (10 lb)	for pre- and main wash. (Soft-rinse as required). Normal water level	Prewash – main wash – cooling – five rinsing cycles – spinning	–	Whites and coloureds should always be washed separately.
Very hot wash 95° C biological HLCC 1	1	B	up to 4.5 kg (10 lb)	for pre- and main wash. (Soft-rinse as required). Normal water level.	Prewash – main wash (extended reaction time between 40 and 60° C) – cooling – five rinsing cycles – spinning	–	For heavily soiled or stained articles, using special biological washing powders.
Very hot wash 95° C without spin-drying HLCC 1,9	1	C	about 2 kg (4 lb)	for pre- and main wash. (Soft-rinse as required). Normal water level.	Prewash – main wash – cooling – five rinsing cycles – no spinning	–	For non-iron cottons.
Very hot wash 95° C biological without spin-drying HLCC 1,9	1	D	about 2 kg (4 lb)	for pre- and main wash. (Soft-rinse as required). Normal water level.	Prewash – main wash (extended reaction time between 40 and 60° C) – cooling – five rinsing cycles – no spinning	–	For heavily soiled or stained articles of cotton or linen which must not be spin-dried.
Very hot wash 95° C without wash HLCC 1	2	A	up to 4.5 kg (10 lb)	for main wash (soft-rinsing as required). Normal water level.	Main wash – cooling – five rinsing cycles – spinning.	–	Whites and coloureds should always be washed separately.
Hot wash 60° C HLCC 2	3	A	up to 4.5 kg (10 lb)	for main wash (soft-rinse as required). Normal water level.	Main wash – cooling – five rinsing cycles – spinning.	–	
Hot wash 60° C without spin-drying HLCC 2	3	C	about 2 kg (4 lb)	for main wash (soft-rinsing as required). Normal water level.	Main wash – cooling – five rinsing cycles – no spinning.	–	

Programme	Progr. control knob	Selector switch	Load size	Washing powder	Sequence of operations	Pumping off the last rinsing water	Practical hints
Warm wash 40° C HLCC 5	4	A	up to 4.5 kg (10 lb)	for main wash (soft-rinse as required). Normal water level.	Main wash – cooling – five rinsing cycles – spinning.	–	
Warm wash 40° C without spin-drying HLCC 5	4	C	about 2 kg (4 lb)	for main wash (soft-rinse as required). Normal water level.	Main wash – cooling – five rinsing cycles – no spinning.	–	
Soft-rinsing Mild Starching Spin-drying	5	A	up to 4.5 kg (10 lb)	fabric softener, high water level, see manufacturer's instructions for starching.	Soft-rinsing or starching – spinning.		Close the tap when spin-drying only. Never turn the programme control knob by hand into the spinning cycle (black square).
Easy-care Fabrics 60° C with prewash. white and colourfast nylon, white and colourfast cottons, polyester mixtures etc. HLCC 3,4	6	C	about 1 kg (or 5–6 shirts) (2 lb)	for prewash and main wash (soft-rinse as required), high water level.	Prewash – main wash – cooling – four rinsing cycles – no spin-drying.	To pump off the last rinsing water set the programme control knob to 11 and the selector switch to C. For pumping & short spinning (automatic SL action) set the programme control knob to 11 and the selector switch to A.	For heavily soiled synthetics such as Perlon or Nylon shirts (incl. shirts of cotton/polyester mixtures). Do not wash white and coloured articles in the same load.
Easy-care Fabrics 60° C without prewash. HLCC 3,4	7	C	about 1 kg (or 5–6 shirts) (2 lb)	for main wash (soft-rinse as required), high water level.	Main wash – cooling four rinsing cycles – no spinning.	To pump off the last rinsing water set the programme control knob to 11 and the selector switch to C. For pumping & a short spin (automatic SL action) set the programme control knob to 11 and the selector switch to A.	

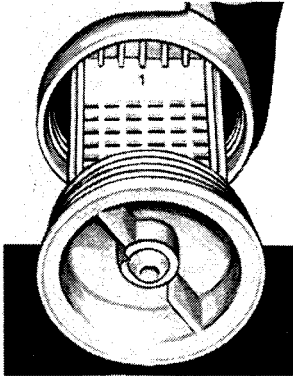
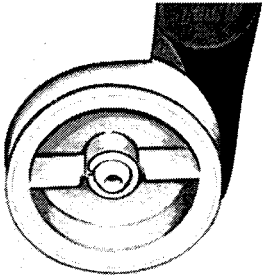
Programme	Progr. control knob	Selector switch	Load size	Washing powder	Sequence of operations	Pumping off the last rinsing water	Practical hints
Easy-care Fabrics 40° C HLCC 4,6	8	C	about 1 kg (or 3x5 m of curtaining (2 lb)	for main wash (soft-rinse as required), high water level.	Main wash – cooling – four rinsing cycles – no spinning.	To pump off the last rinsing water set the programme control knob to 11 and the selector switch to C. For pumping & a short spin (automatic SL action) set the programme control knob to 11 and the selector switch to A.	Dralon, Orlon, Diolen, Trevira, coloured nylon and Perlon fabrics, curtaining (soak heavily soiled curtains – programme Soaking – Prewash extra). Curtains of synthetic fibres are delicate and can easily be damaged during handling (pulled threads). Under no circumstances can we accept any responsibility for such damage.
Woollens 'LCC 7,8	9	C	about 1 kg (2 lb)	for main wash (soft-rinse as required), high water level. Be careful with washing powders specially designed for delicates (excessive foaming).	Main wash – cooling – four rinsing cycles – no spinning.	To pump off the last rinsing water set the programme control knob to 11 and the selector switch to C. For pumping & a short spin (automatic SL action) set the programme control knob to 11 and the selector switch to A.	As far as possible wash only garments of a similar colour in one load. Particularly delicate items should either be washed by hand or dry-cleaned.
Soft-rinsing Synthetics	10	C	about 1 kg (2 lb)	fabric softener, high water level, see manufacturer's instructions for starching.	Soft-rinsing	To pump off the rinsing water set the programme control knob to 11 and the selector switch to C. For pumping & a short spin (automatic SL action) set the programme control knob to 11 and the selector switch to A.	After-treatment for delicates.

Programme	Progr. control knob	Selector switch	Load size	Washing powder	Sequence of operations	Pumping off the last rinsing water	Practical hints
Pumping – Short spin (automatic SL action)	11	A			Pumping – short spin – loosening.		To pump off the soaking water or the last rinsing water (special-care programmes). The laundry does not drip when removed from the machine.
Pumping	11	C			Pumping		To pump off the soaking water or, in the case of the special-care programmes, the last rinsing water.
Soaking Prewash extra Bio	12	C	up to 4.5 kg (10 lb)	for prewash, high water level.	The laundry remains floating in the soaking water.	To pump off the soaking water set the programme control knob to 11 and the selector switch to C. For pumping and a short spin (automatic SL action) set the programme control knob to 11 and the selector switch to A.	For longer soaking periods (several hours) push the programme control knob back in and close the tap as soon as the temperature of 40° C has been reached (end of drum movement). Do not switch the machine on again until you wish to pump off the soaking water. Select a complete programme after soaking. A programme without prewash is generally sufficient. Be careful not to use too much washing powder.

Care and maintenance

After washing close the tap and pull out the plug or switch off the main switch.

Leave the lid open for a short while to allow the machine to dry out. Remove any washing powder left in the dispenser. Wipe the outside of the machine with a damp cloth and dry it. Clean the **drain filter** (at the bottom of the rear panel) from time to time. To do this, turn the filter cover anti-clockwise. Please note that a small quantity of residual water will escape when opening the filter.



Occasionally clean the filter at the water inlet. What may look like rust stains on drum or tub is due to ferrous foreign bodies introduced with the laundry or chalybeate water. Remove such stains with a fine scouring powder.

Do not use chlorous or ferrous scouring powders. Never use acids, chloride or bleach in the machine. Should your machine show grey deposits of lime, please do not try to remove them by unsuitable means but contact your AEG Service Department instead.

If there is a danger of frost, empty the machine in good time of all water by opening the drain filter (tilt the machine back if necessary) and unscrewing the filler hose.

Fault finding

Non-functioning of your fully automatic washing machine is mostly due to a triviality which you can rectify yourself.

The machine is not working

Is the machine plugged in or switched on?

Is the fuse in order?

Is the lid of the machine closed properly?

Has the control knob been pulled out?

Too little or no water is coming in

Has the tap been opened?

Is the filter at the water inlet blocked? — It should be cleaned from time to time.

Is the filler hose kinked?

Is the water supply pressure too low?

Remove the flow regulator if necessary.

The water is immediately running off again through the drain hose.

Does the drain hose hang too low?

Minimum heights:
for LAVAMAT 85 SL —

60 cm; for LAVAMAT 64 SL — half the height of the machine. Please note further that the discharge end of the drain hose must not be immersed in the pumped-off water.

The programme control knob stops during the programme cycle.

This is perfectly in order as your fully automatic washing machine is fitted with the so-called Thermo-Chron control system. The control knob stops during prewash and main wash until the required temperature is reached.

The washing powder foams over

Too much washing powder in the machine!

Omit the prewash from your next wash programme.

The programme (white or coloured linens and cottons) has been completed without spin-drying.

The thermal protection device of the motor has cut in.

Possible causes: blocked drain filter, kink in the drain hose.

The spinning cycles will automatically come on again after some time (up to an hour).

The lid cannot be opened immediately after completion of the programme cycle.

Please wait until the lid locking mechanism unlocks! About 1 minute.

Please do not hesitate to contact your AEG Service Agent if you cannot trace the cause of a fault or if you have a special problem. To assist our service staff, please quote the full description of the machine and the E-number on all communications.

You find these particulars on the nameplate of the machine and on the front inside cover of this brochure.

Connection, technical data

Dimensions

LAVAMAT 85 SL:
Height 82 cm (or 85 cm incl.
the optional worktop)

Width 39.5 cm

Depth 56 cm

LAVAMAT 64 SL:

Height 64 cm

Width 39.5 cm

Depth 56 cm

Weight

85 kg approx.

Storage

Moves freely on castors.

IMPORTANT: Please remember that your fully automatic washing machine vibrates during operation and requires therefore sufficient clearance all-round.

For the same reason you should not use the lid of the machine as a deposit surface when the machine is in operation.

Electrical connection

Voltage 220/240 AC

Plug 13 amp fused or 15 amp.

Warning: This appliance must be earthed.

Important!

The wires in the mains lead are coloured in accordance with the following code: –

1. Green and yellow – Earth
2. Blue – Neutral
3. Brown – Live

Fit the mains lead with a 3-pin plug.

As the colours of the wires in the mains lead of this appliance may not correspond with the coloured markings identifying the terminals in your plug, proceed as follows:

1. The wire which is coloured **green and yellow** must be connected to the **earth** terminal in your plug, which is

marked with the letter E or by the earth symbol \perp or coloured **green**, or **green and yellow**.

2. The wire which is coloured **brown** must be connected to the **live** terminal which is marked with the letter L or coloured **red**.

3. The wire which is coloured **blue** must be connected to the **neutral** terminal which is marked with the letter N or coloured **black**.

When wiring the plug, ensure that all strands of wire are securely retained in each terminal. Do not forget to tighten the mains lead clamp on the plug. If your installation is fitted with 2-pin socket outlets, or if you are in doubt, consult a qualified electrician.

Water supply

Connection to $\frac{3}{4}$ " tap through high-pressure hose of $\frac{3}{8}$ " x 1.5 m long.

Sealing rings are provided. Do not connect to a hot water supply.

Ensure to comply with the drinking water regulations of your local Water Board. Anti-siphon incorporated in the machine.

Where the water pressure is less than about 1 bar (10 N/cm²) unscrew the filler hose, remove the flow regulator and refit the retaining ring and strainer.

Below 0.5 bar (5 N/cm²) consult your AEG Service Department. Where the supply pressure exceeds 10 bar (100 N/cm²) it is necessary to fit a pressure relief valve (type AD 723 E-No. 612 896 723).

Where the filler hose provided is too short, it should be replaced with a suitable high-pressure hose (50 bar \approx 50 kp/cm²) of the appropriate length. Never add to the existing hose!

Water outlet

Drain hose (I/D 19 mm max.) to be hooked over sink or similar.

Minimum heights:

LAVAMAT 85 SL = 60 cm

LAVAMAT 64 SL = half the height of the machine.

Pump head 1 m.

Any water left in the machine is due to the thorough inspection at our works.

Optional extras

Worktop.

Capacity

Up to 4.5 kg (10 lbs) dry laundry.

Spinning speed

560 rpm approx.

AEG

ADVANCED

ENGINEERING FROM

GERMANY

H 245 200 940 — 08773./02 —
Subject to change without notice